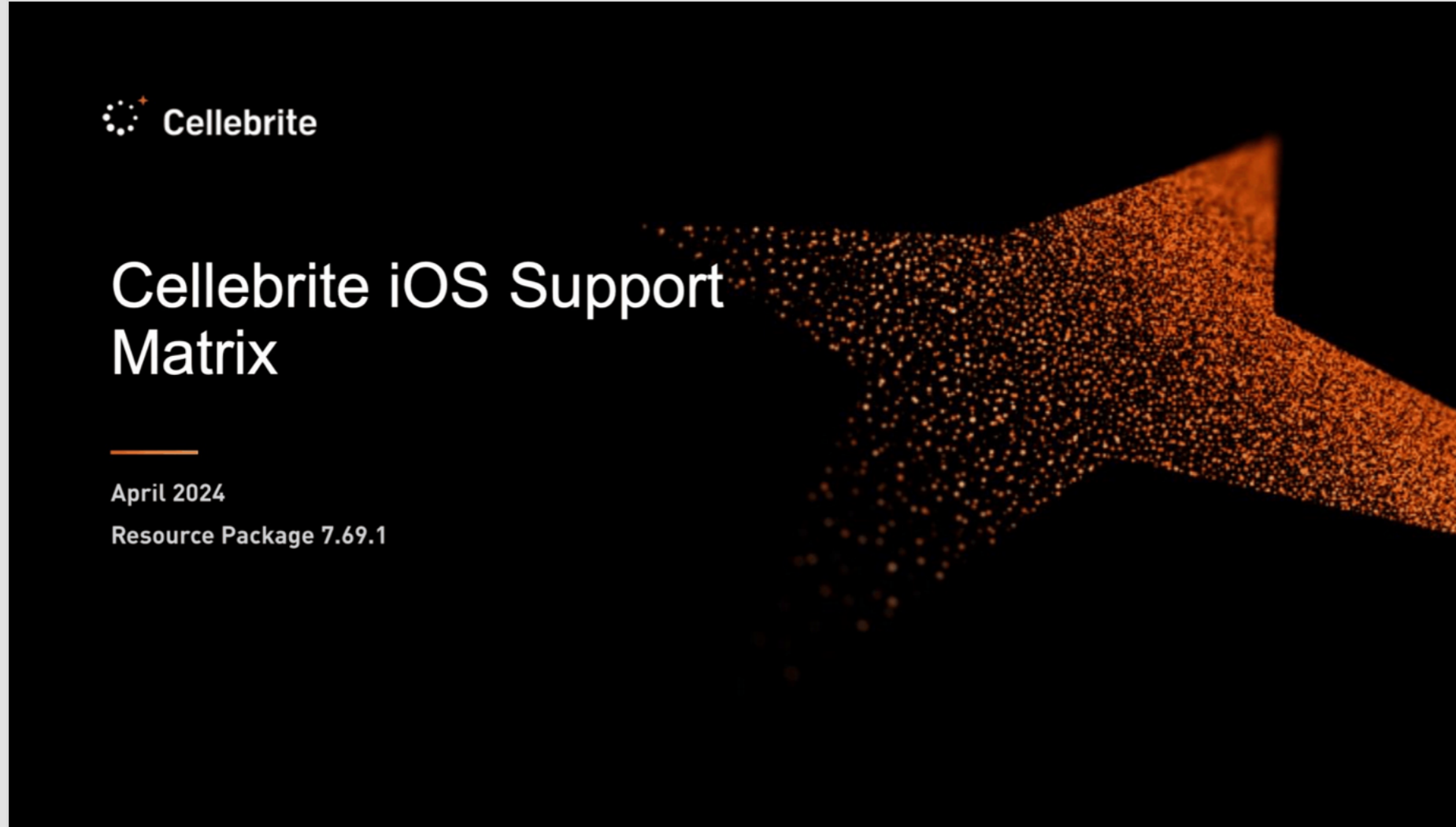


p. 1



**celebrite-ios-document-april-2024**

[Original Document \(PDF\) »](#)

Contributed by Joseph Cox (404 Media)

OCR: Tesseract

p. 2

**iOS Support Matrix – Limitations - 7.69.1**

1. Since iOS 16.0 for some devices Super-Sonic may not be available. Be mindful of this when choosing to take a device out of AFU for brute-force. For those devices, Premium will automatically choose Tailwinds brute-force.
2. iPhones 12 & 13 running iOS 15, are only supported from iOS 15.5 – 15.7 (both locked & unlocked)
3. For iPhone devices where passcode is known, it is recommended to enable USB accessories in the settings -> passcode & Face ID to improve the success chances and avoid connectivity issues.
4. After finishing the iOS 17 BF, there is a current limitation that requires uninstalling the agent and accessing it again in the Unlocked flow to perform a FFS extraction. For A12 iOS 17.1.x and above extraction is not supported.
5. IPR: Instant Password Retrieval - the ability to potentially recover passcode in a

